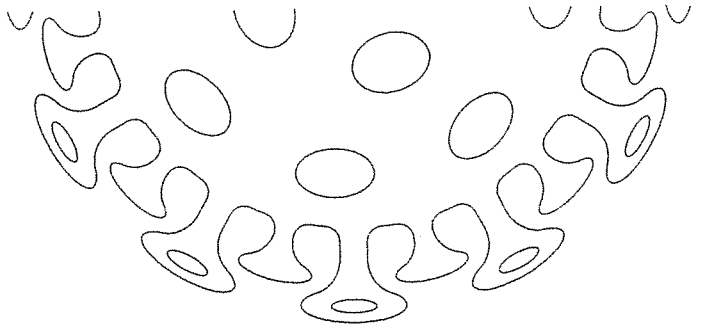
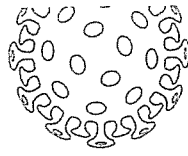




Public Health  
England



# Advice on the coronavirus for places of education

## How serious is the coronavirus?

- it can cause flu-like symptoms, including fever, cough & difficulty breathing
- the infection is not serious for most people, including children
- there is currently no vaccine
- most people get better with enough rest, water to drink and medicine for pain

## How likely are you to catch the virus?

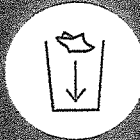
- you can only catch it if you have been close to a person who has the virus
- the chance of being in contact with the virus is currently low in the UK
- if you have travelled to areas where many people are infected, your chance of catching the virus is higher, i.e. China and any affected areas

## How can you stop coronaviruses spreading?

### If you need to cough or sneeze



Catch it  
with a tissue



Bin it



Kill it  
by washing  
your hands with  
soap & water or  
hand sanitiser

### You should wash hands with soap & water or hand sanitiser



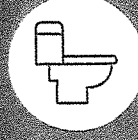
After breaks  
& sport  
activities



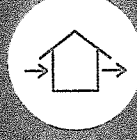
Before  
cooking  
& eating



SCHOOL  
ETC.  
On arrival at  
any childcare  
or educational  
setting



After using  
the toilet



Before  
leaving  
home



Try not to touch your  
eyes, nose, and mouth  
with unwashed hands



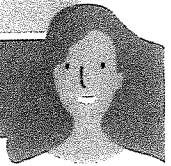
Do not share items that come  
into contact with your mouth  
such as cups & bottles



If unwell do not share  
items such as bedding,  
dishes, pencils & towels



Stop germs spreading with our e-Bug resources on hand and respiratory hygiene lesson plans for KS1, 2 and 3: [campaignresources.phe.gov.uk/schools](https://campaignresources.phe.gov.uk/schools)

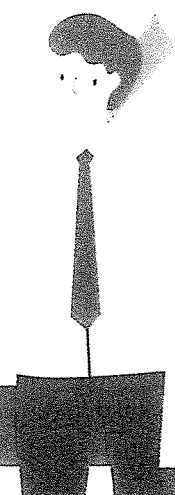


## What should you do if you feel unwell?

Keep away from others and stay at home to stop the infection spreading. Avoid public transport if you think you have symptoms of coronavirus. If you become unwell at a place of education, tell a member of staff and let them know if you have travelled to any other countries in the last 14 days.

If your staff member or parent thinks you have symptoms of coronavirus, they should call **NHS 111** for advice. Follow the UK Government advice for childcare or educational settings [gov.uk/government/publications/guidance-to-educational-settings-about-covid-19](https://www.gov.uk/government/publications/guidance-to-educational-settings-about-covid-19). Parents can visit **NHS.UK** to find out more information. Teachers and support staff should follow the UK Government advice.

Staff, students and pupils who have returned from Wuhan and Hubei Province in China should self isolate, and NOT attend education or work for 14 days. See **NHS.UK** for advice on coronavirus.



**If there is an emergency, call 999 immediately**